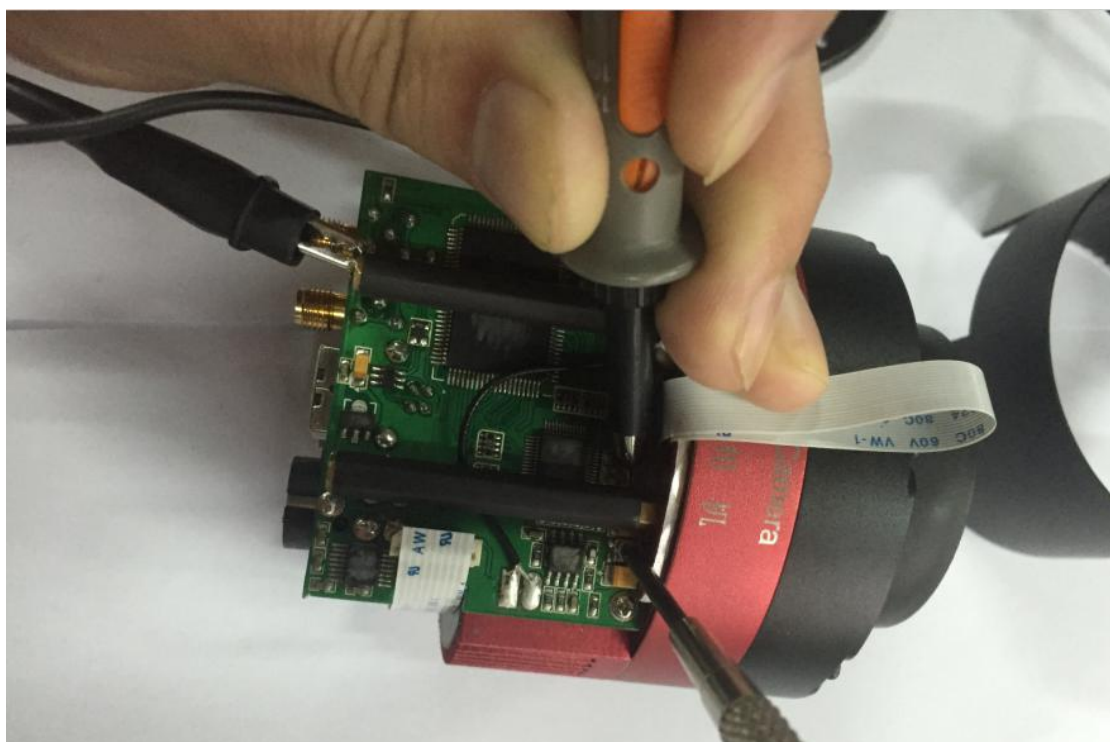
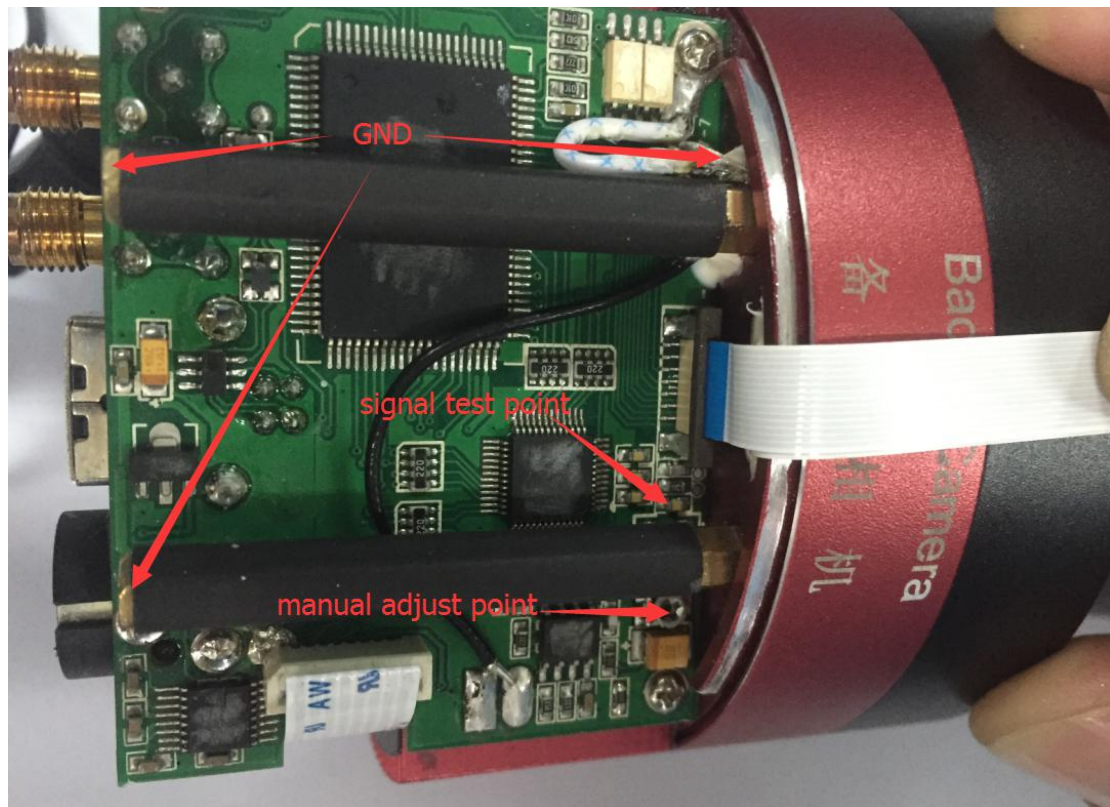


CCD signal adjust

1.Remove those four screws,open the camera



2. According to the follow picture, confirm the test point, then connect camera to the capture software, open the software choose low readout speed mode, use the oscilloscope test the signal test point. check what is the CCD signal high level display with the oscilloscope, use the small screwdriver to adjust the manual adjust point, make sure the CCD signal high level between +2V ~+2.2V





CCD Signal output:

2.2V

